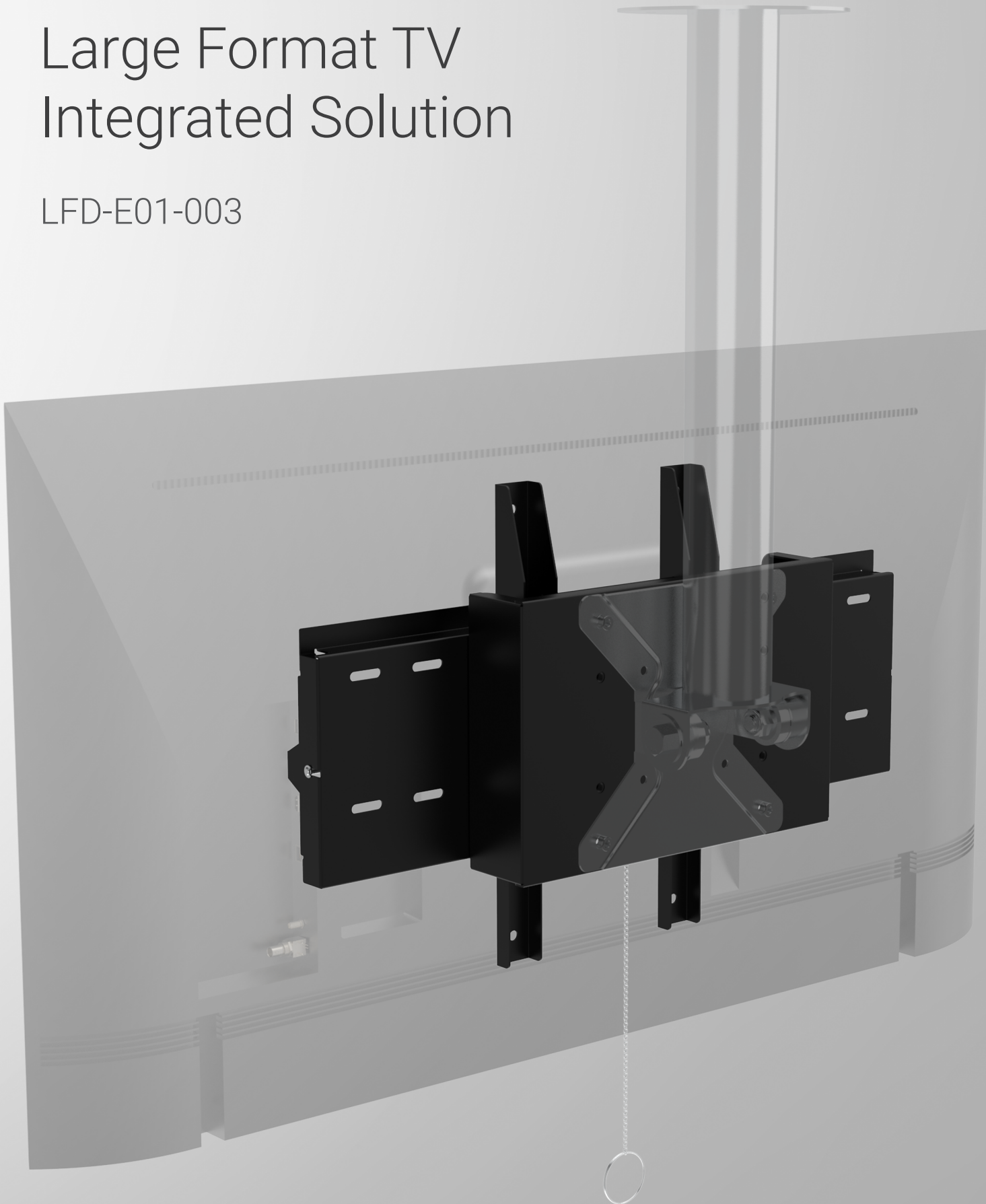




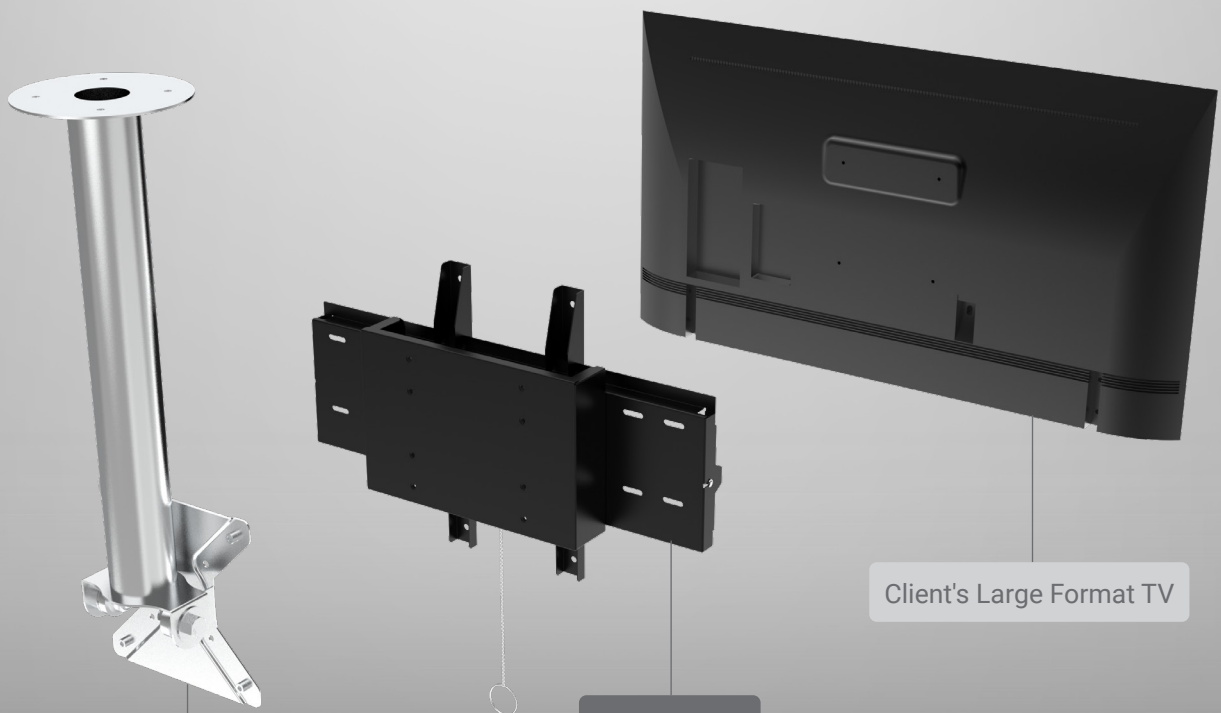
Large Format TV Integrated Solution

LFD-E01-003





Recognizing that most customers prefer commercial TVs for KPI displays due to their cost efficiency and wide range of sizes, we have developed an assembly designed for effortless installation and maintenance, making full use of commercial TV compatibility.



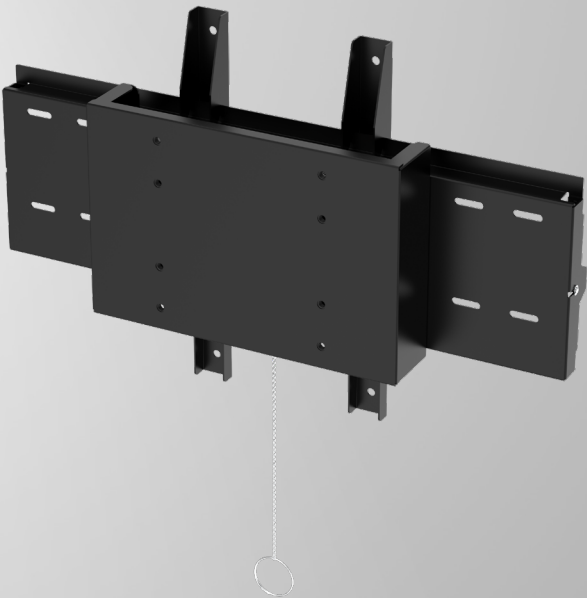
Client's Ceiling Mount w/VESA

LFD-E01-003

Client's Large Format TV

LFD-E01-003

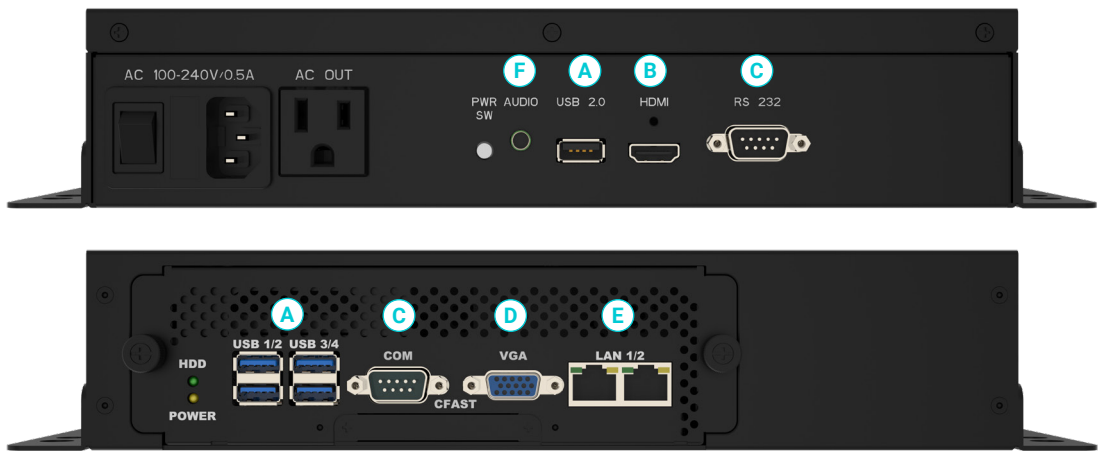
Designed for effortless installation and maintenance by integrating commercial TVs.



+



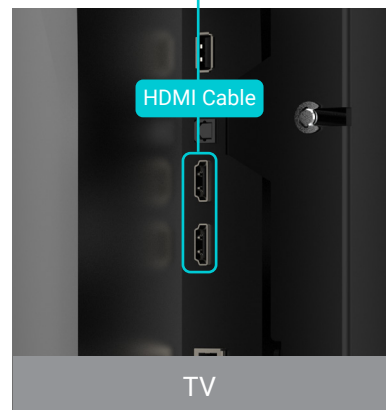
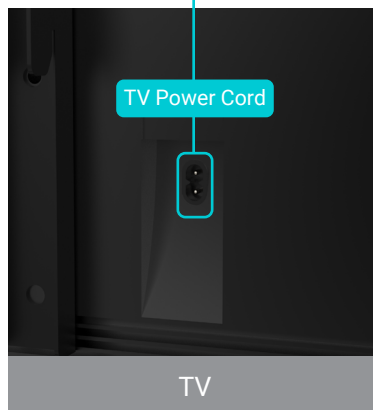
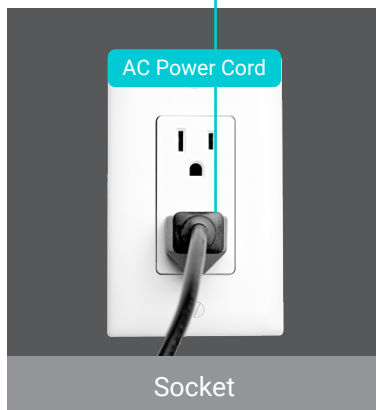
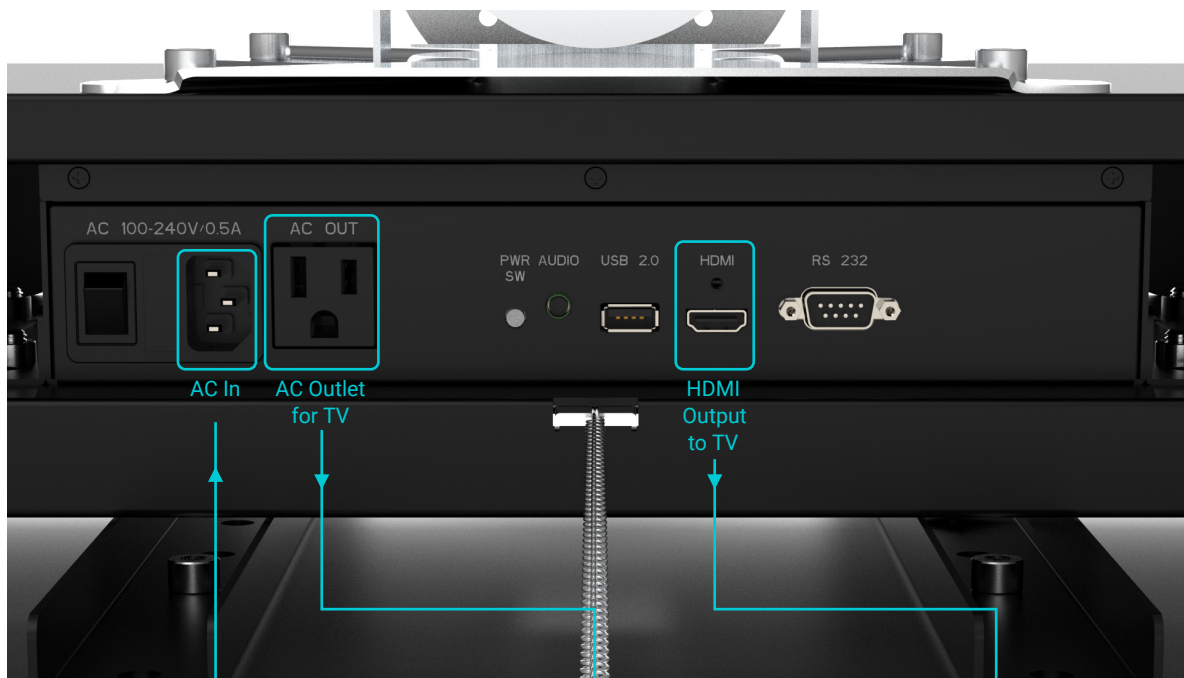
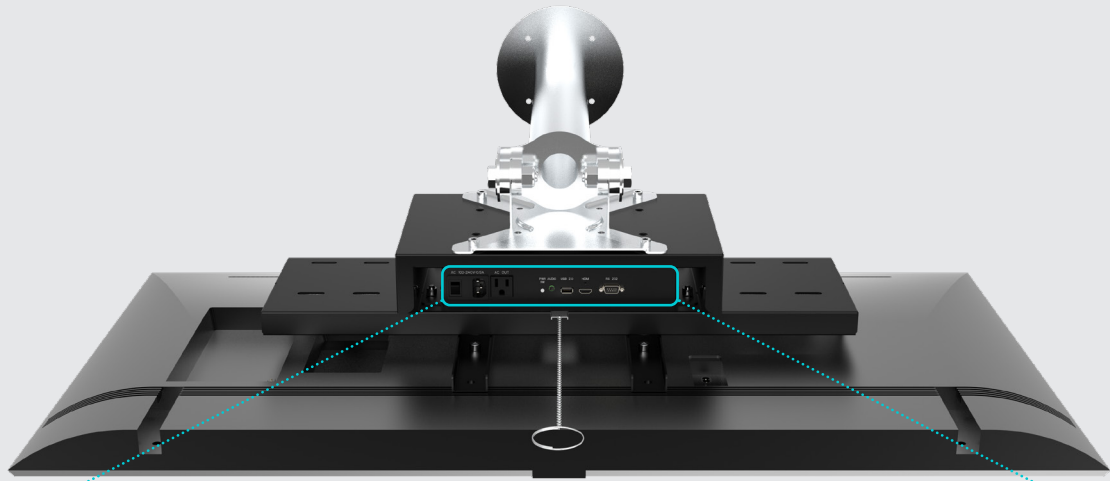
+

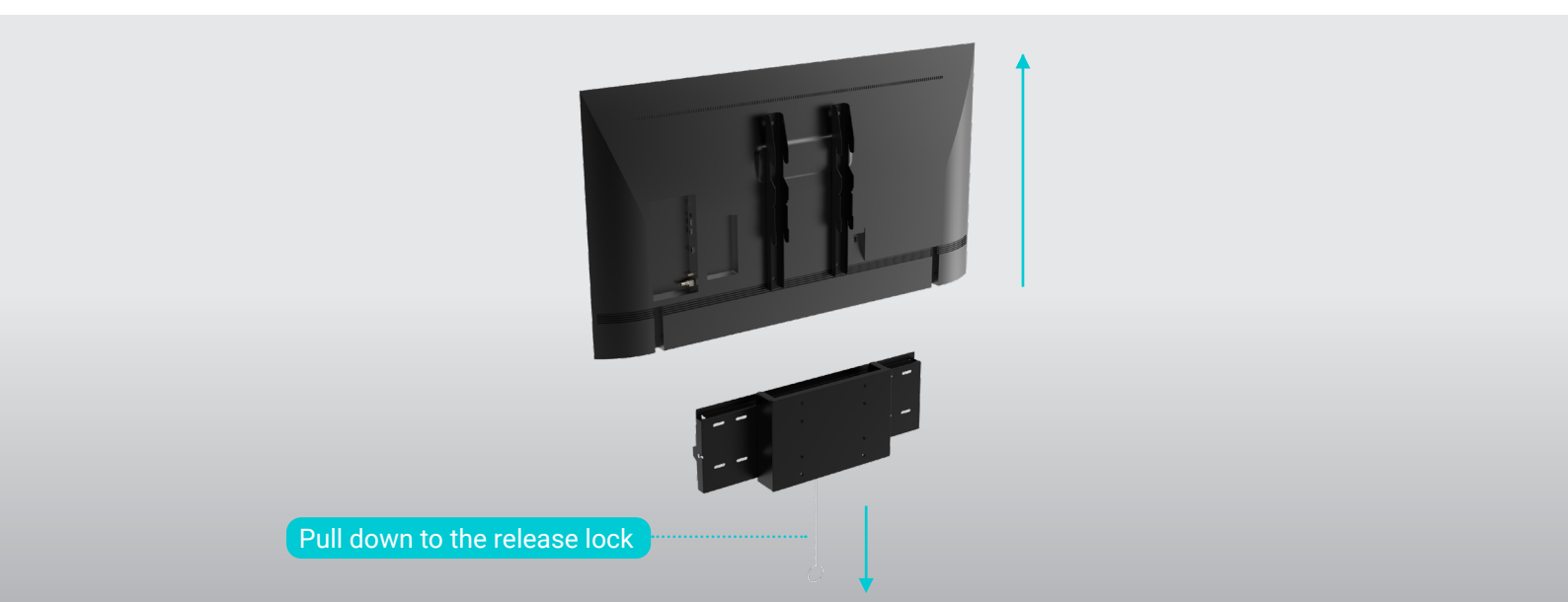
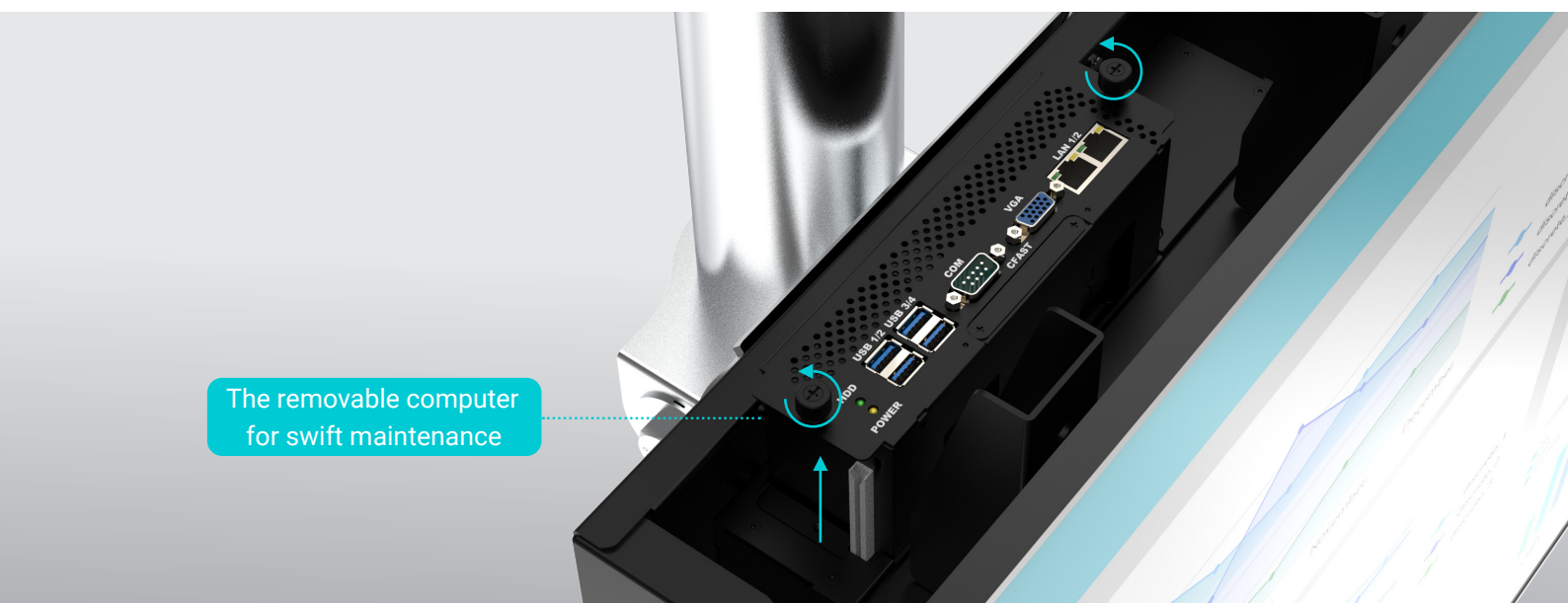
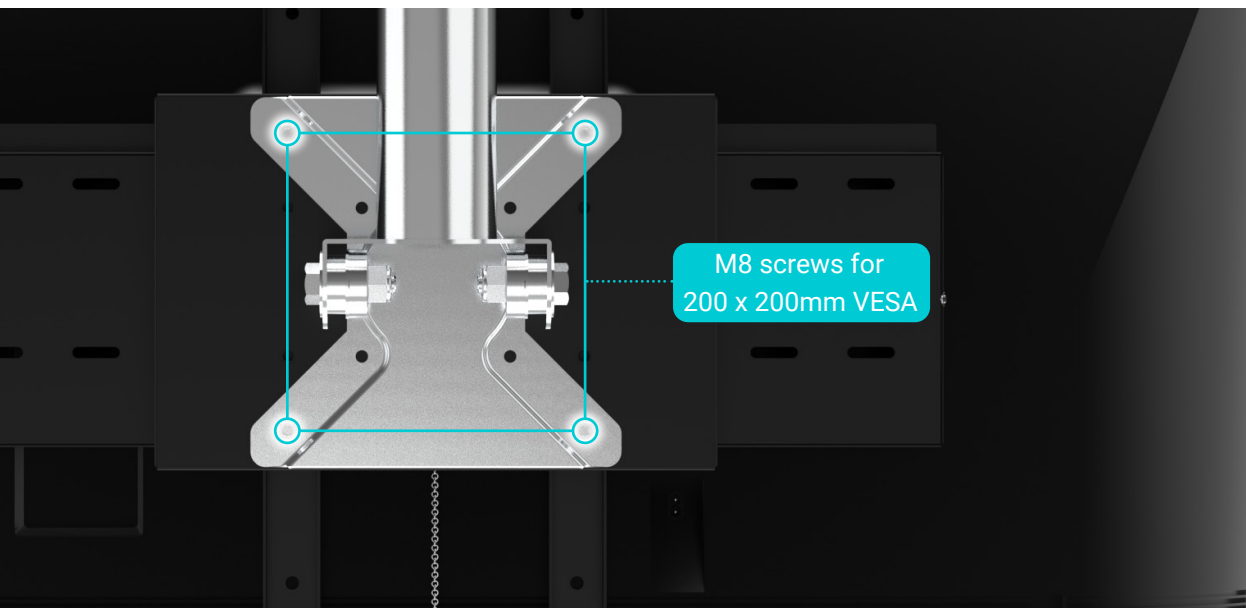


- | | | |
|---------------------------|--|--------------------------|
| A 5x USB 2.0 ports | C 2x RS-232/422/485 BIOS Selectable | E 2 x Gigabit LAN |
| B 1x HDMI | D 1x VGA | F Line Out |

MiniBox-116-E01-003

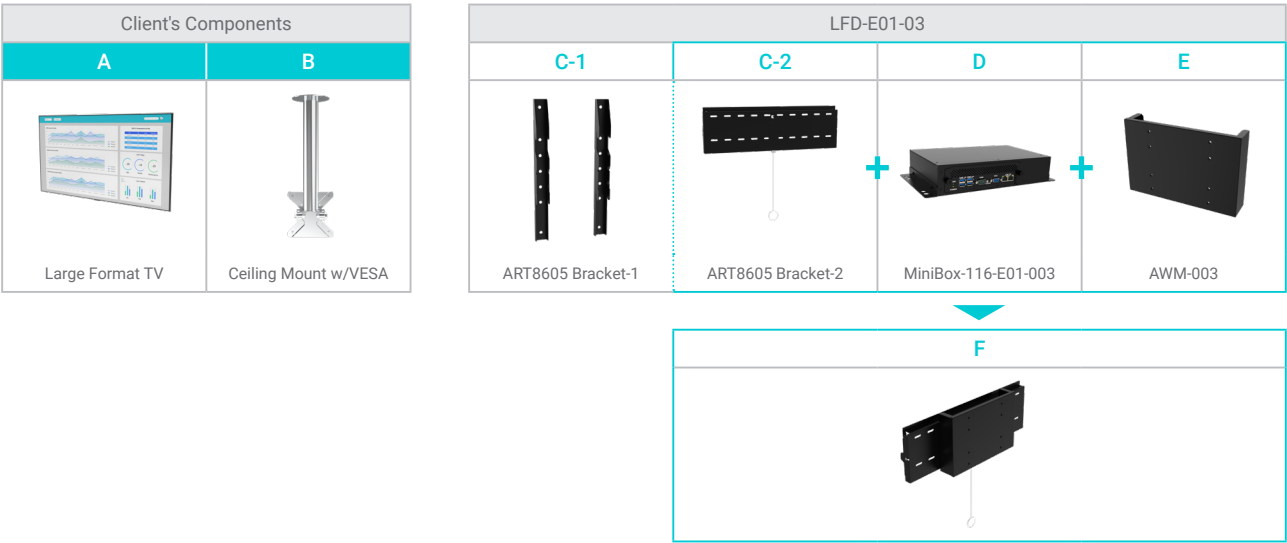
One Power Source for Your TV and Computer



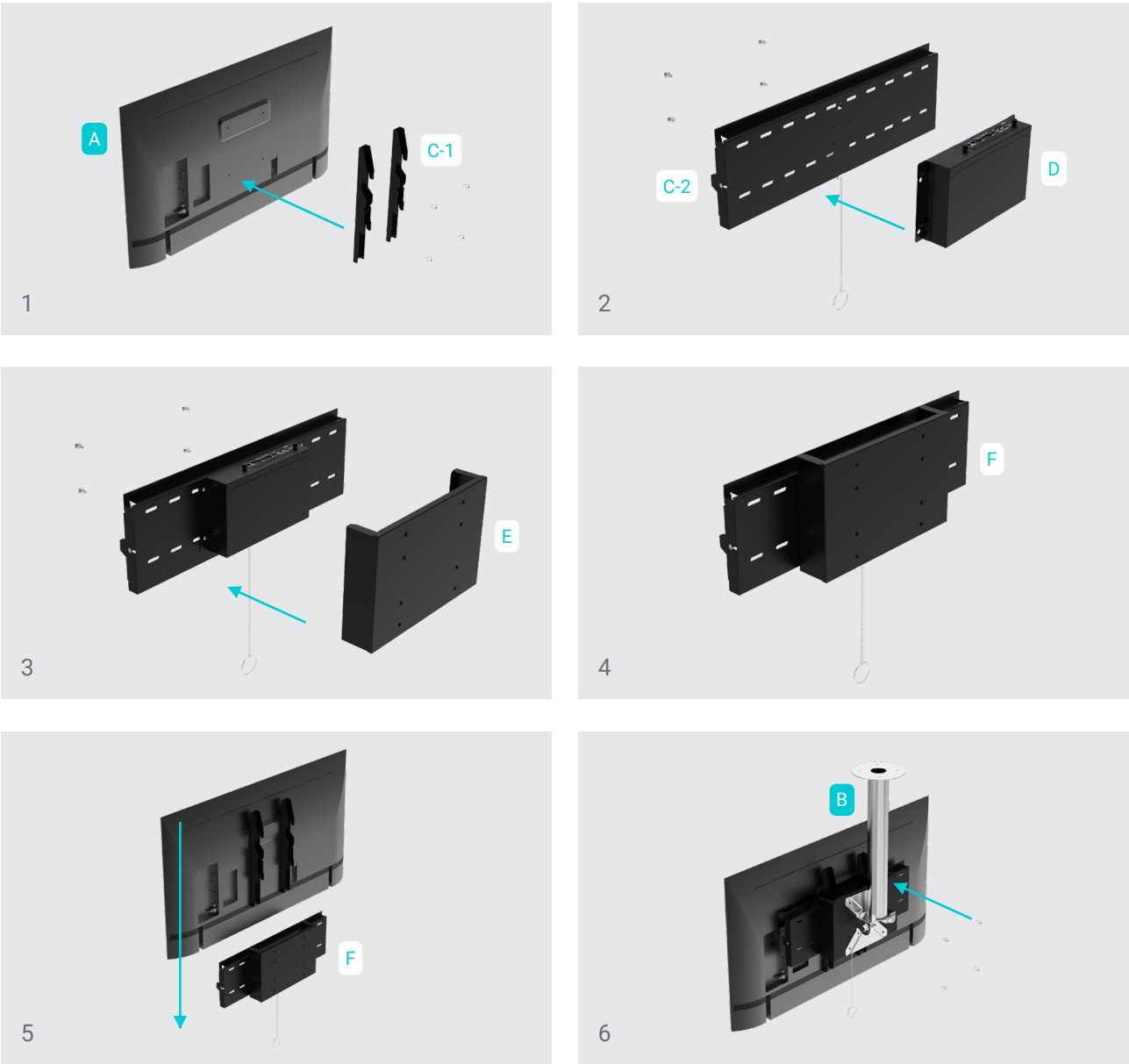


Easy Installation

Configurations



Assembly Instructions





www.aristaipc.com

ARISTA Corporation (USA)

Address: 48460 Lakeview Blvd, Fremont, CA 94538

Phone: +1-510-226-1800

eFax: 510-405-8437

Email: sales@goarista.com